

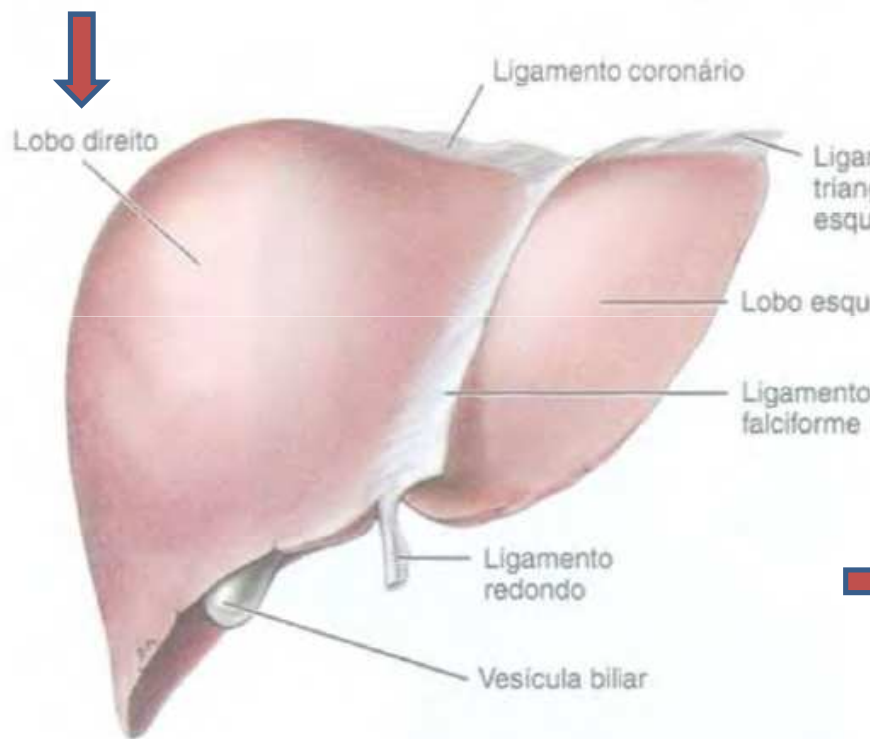


Fígado: Anatomia

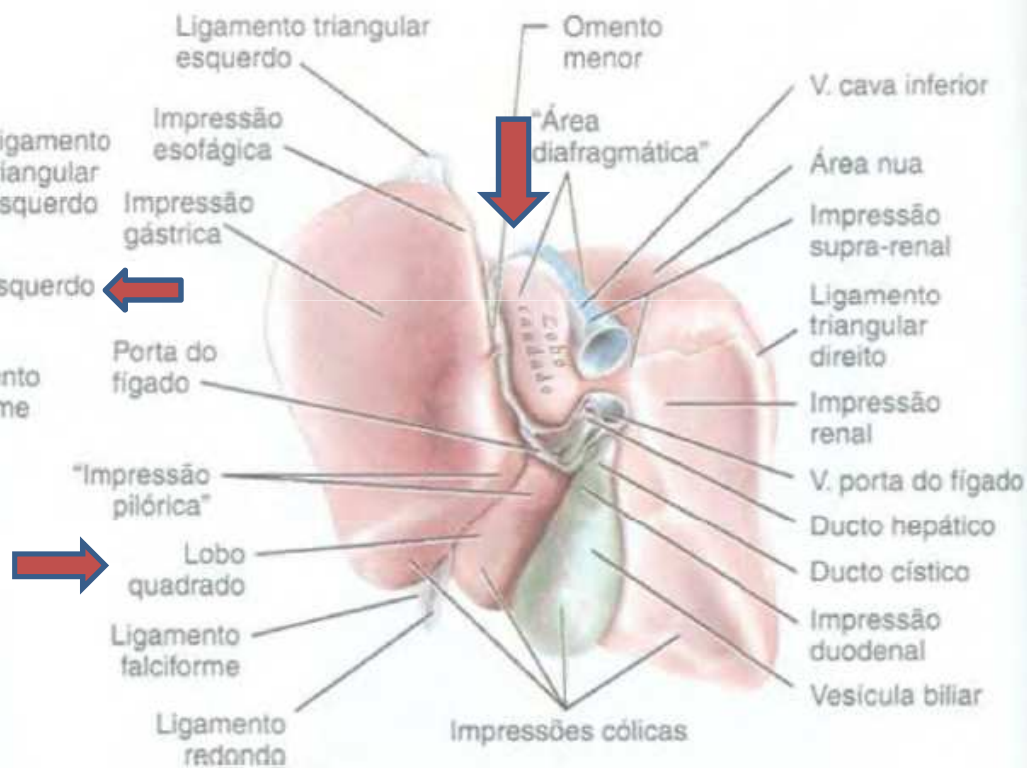
**Acadêmica:
Renata Gomes**



Lobos

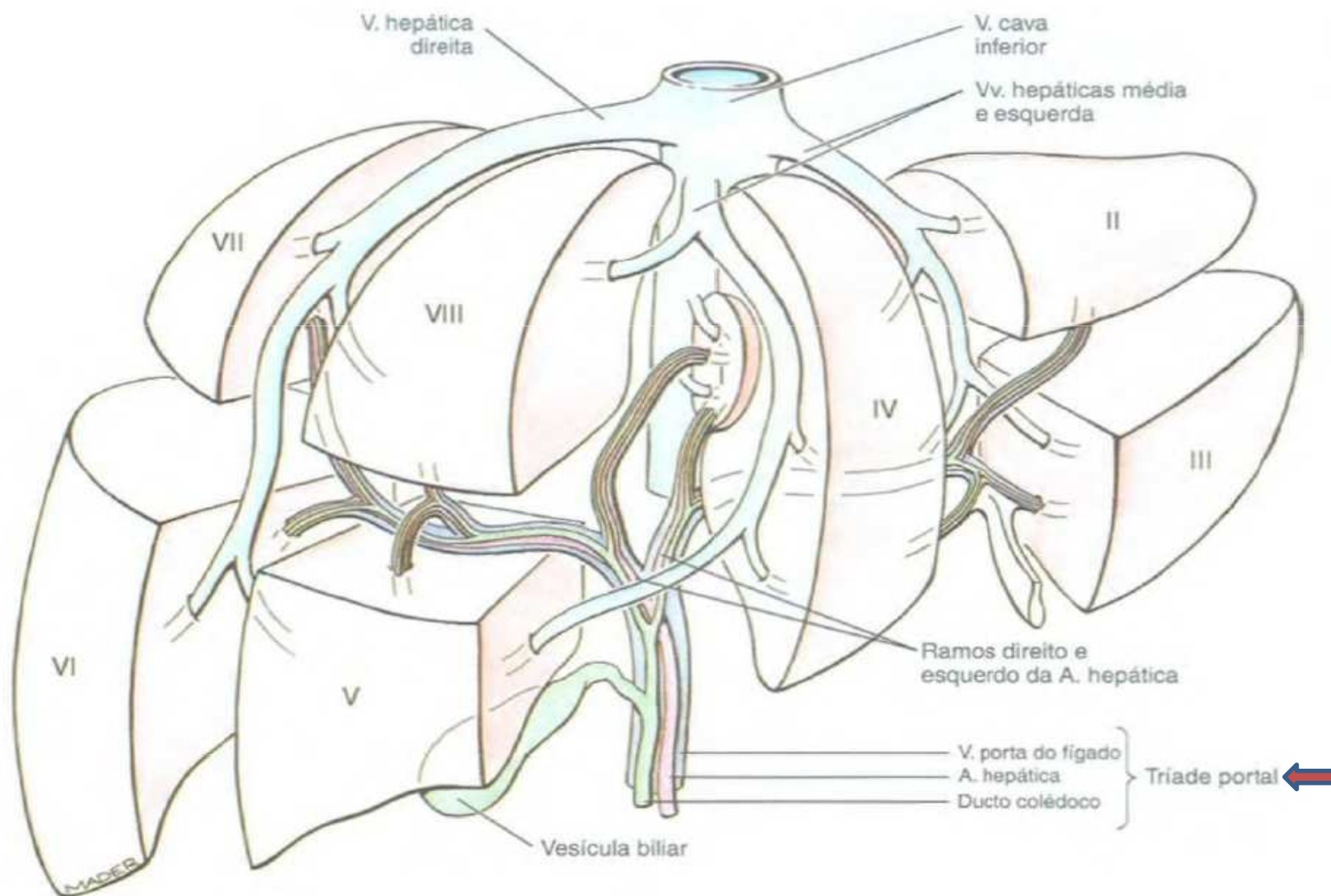


(C) Face diafragmática

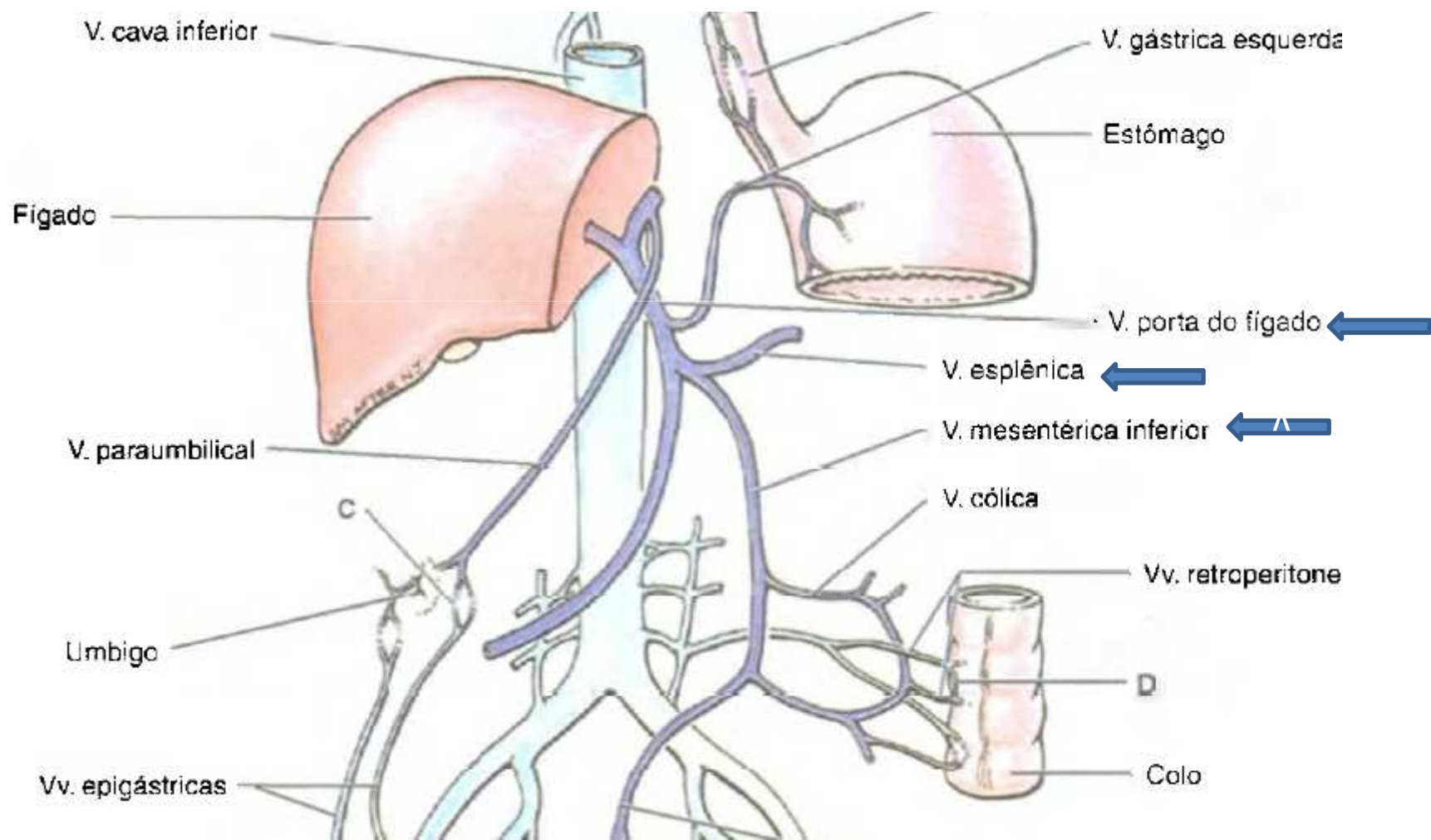


(D) Face visceral

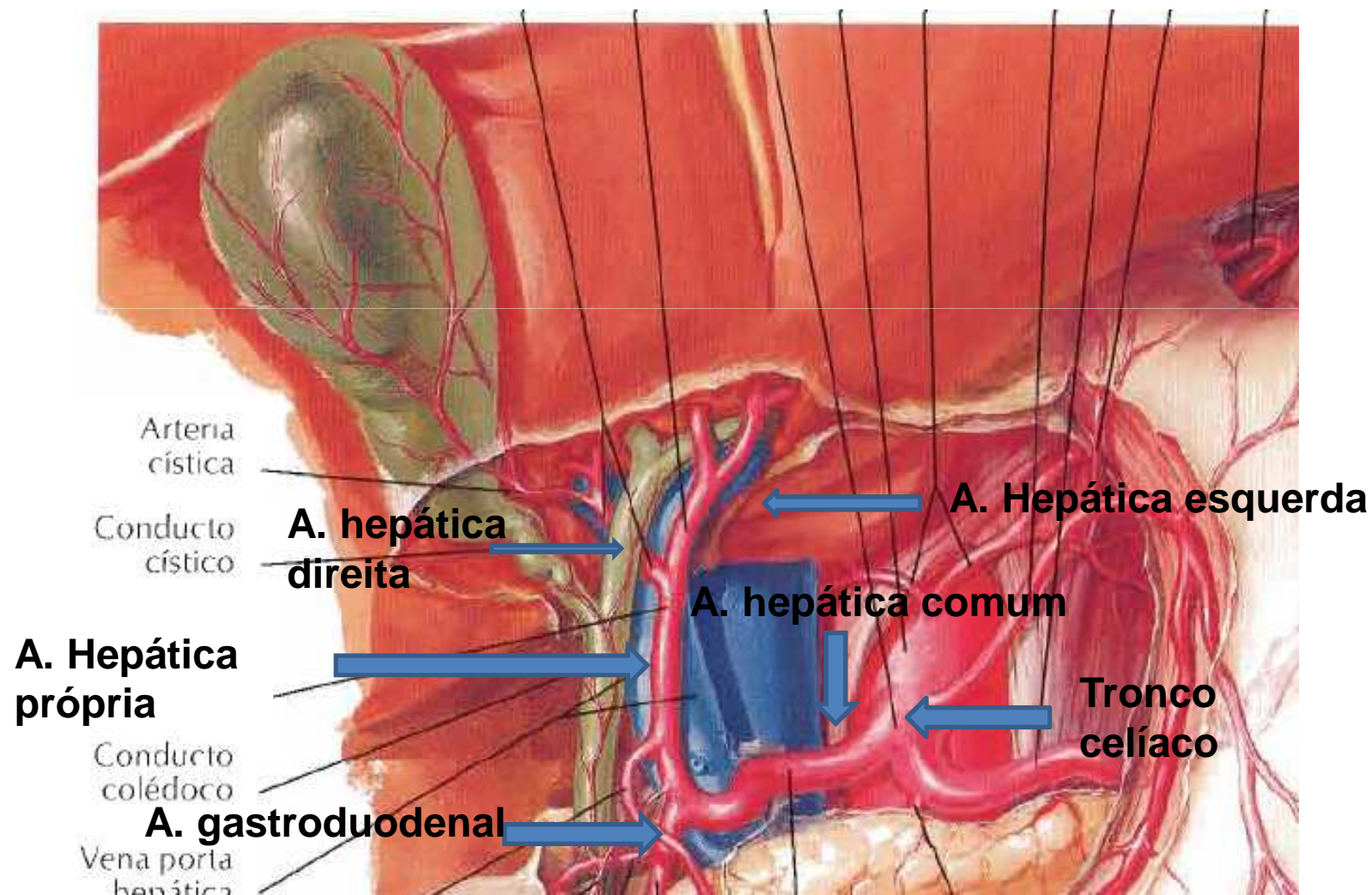
Subdivisão e Vascularização



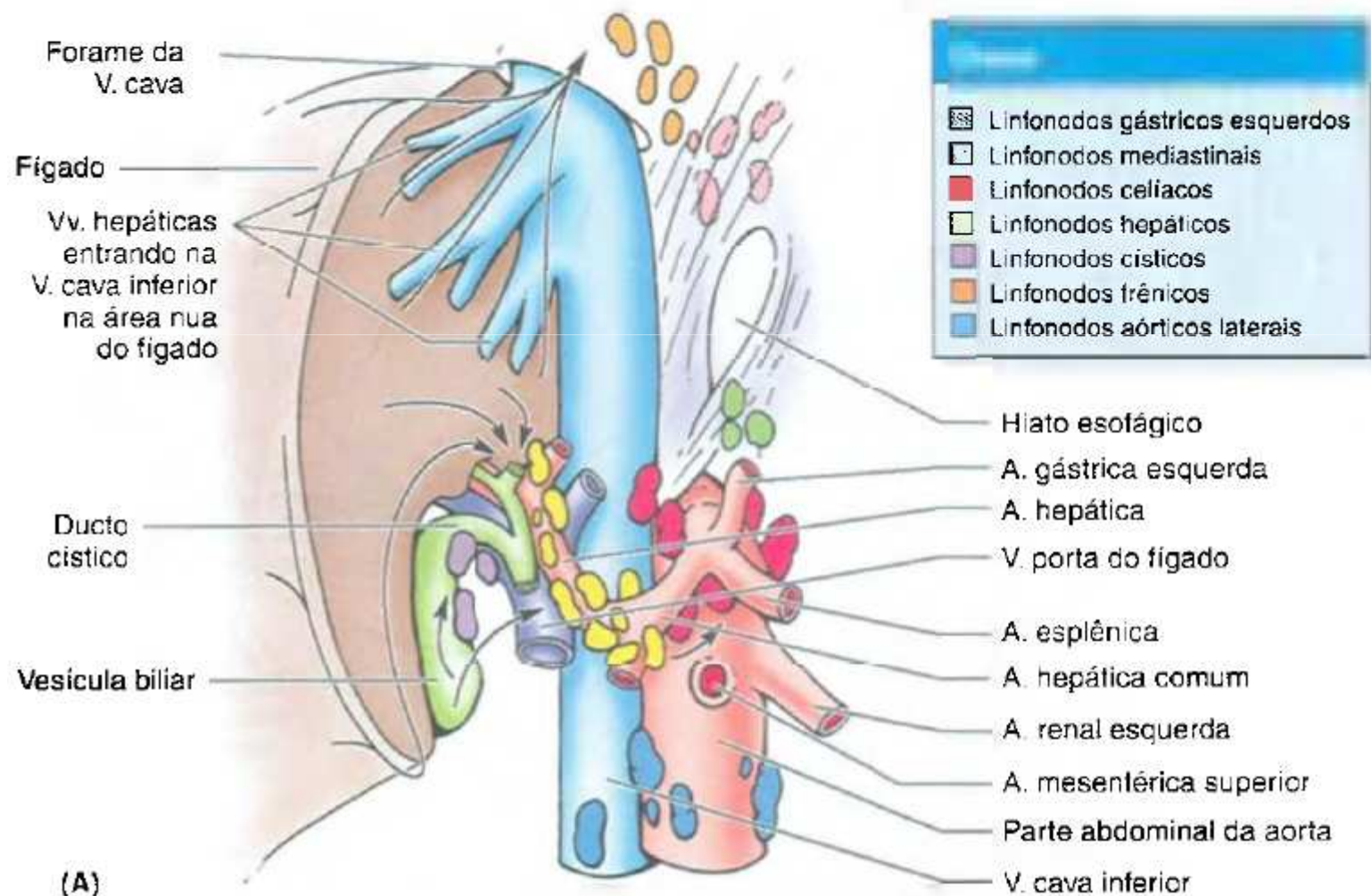
Veia Porta



Artéria Hepática

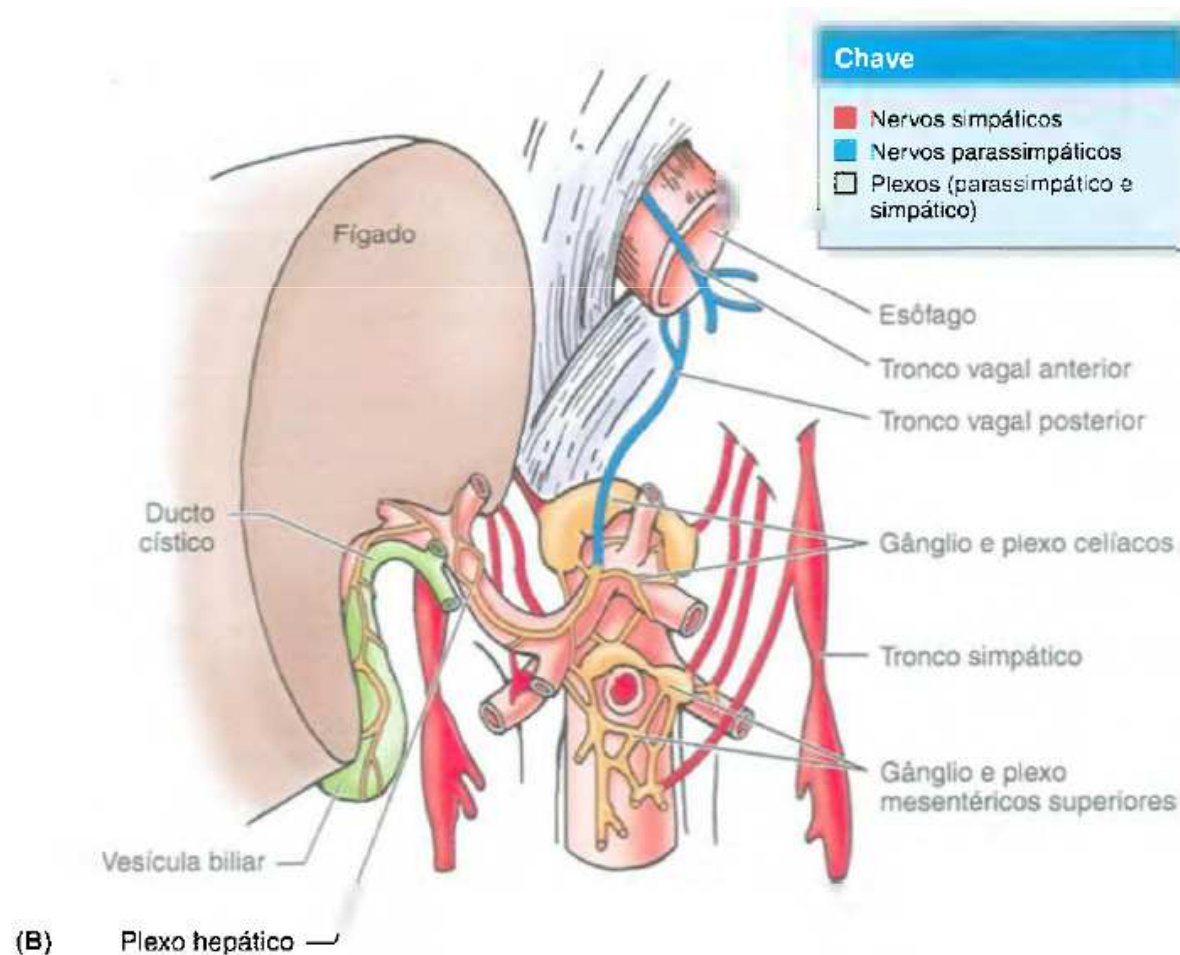


Drenagem linfática

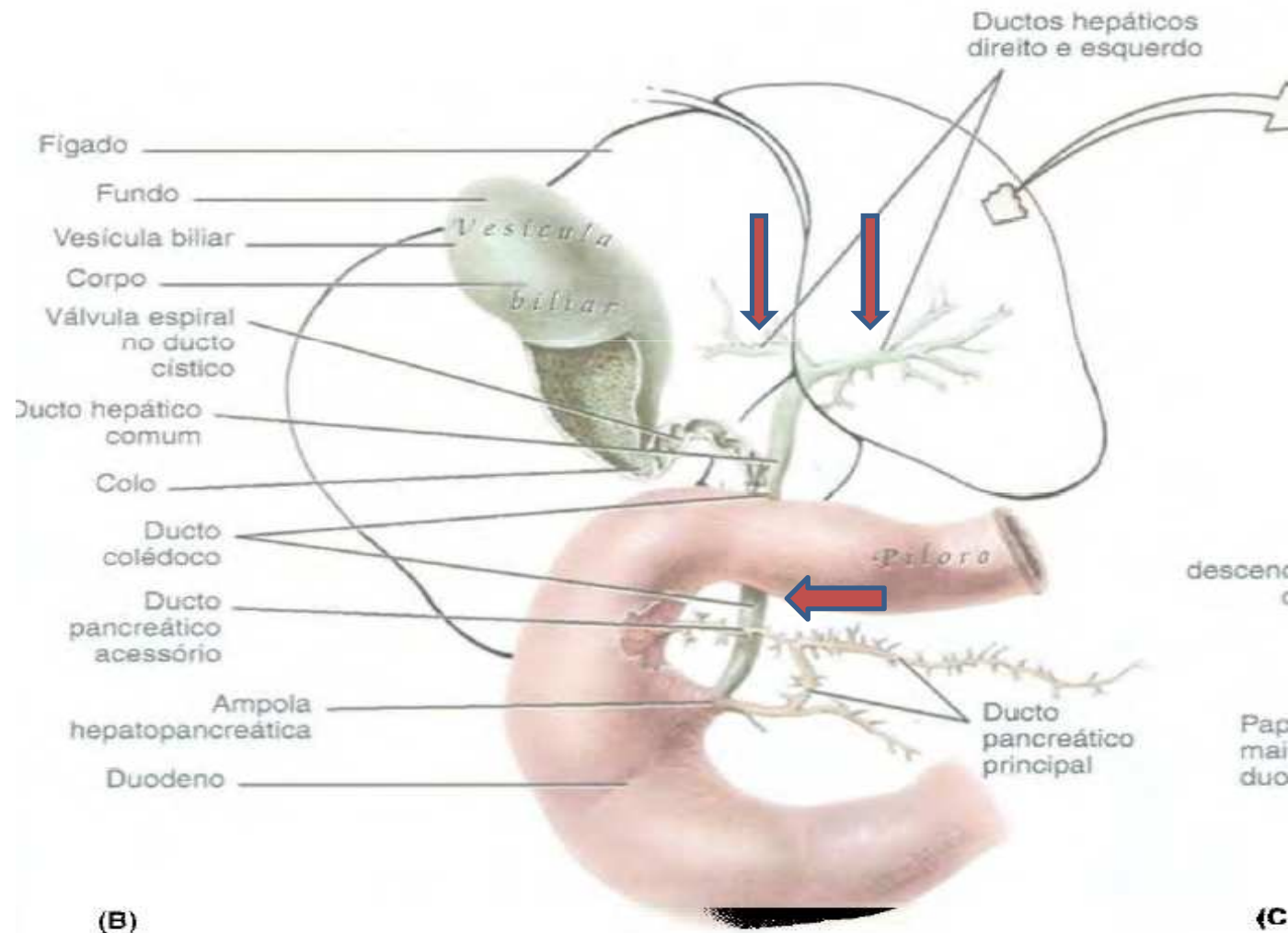


Inervação

- Plexo hepático (plexo celíaco).



Ductos biliares





- Anatomia orientada para a clínica 5 ed. Moore